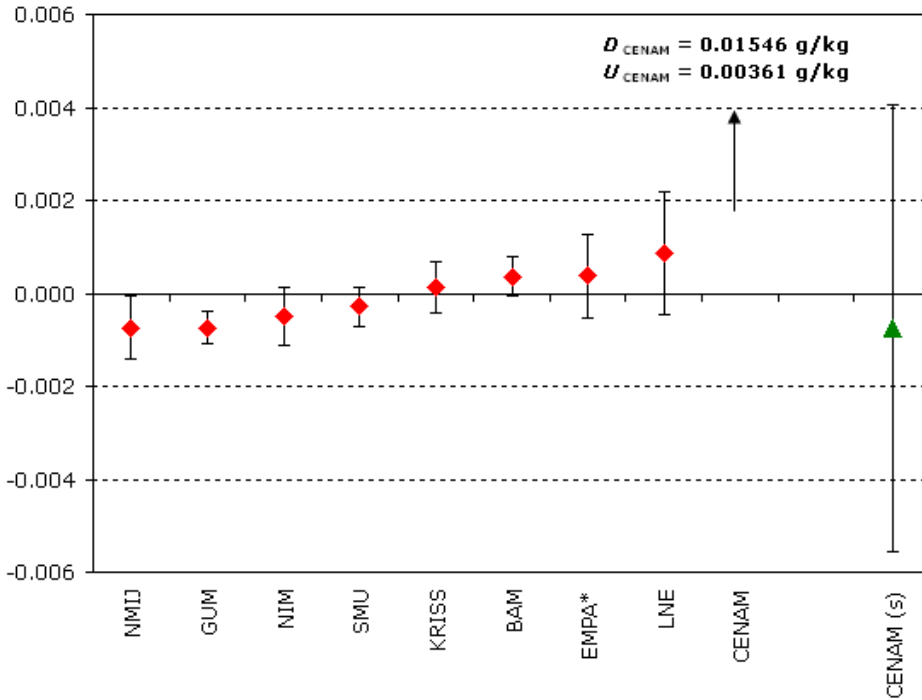


CCQM-K29 and CCQM-K29.1

MEASURAND : Mass fraction of Chloride in anion calibration solution

NOMINAL VALUE : ~ 1 g/kg

Degrees of equivalence D_i and expanded uncertainty U_i ($k = 2$) expressed in g/kg



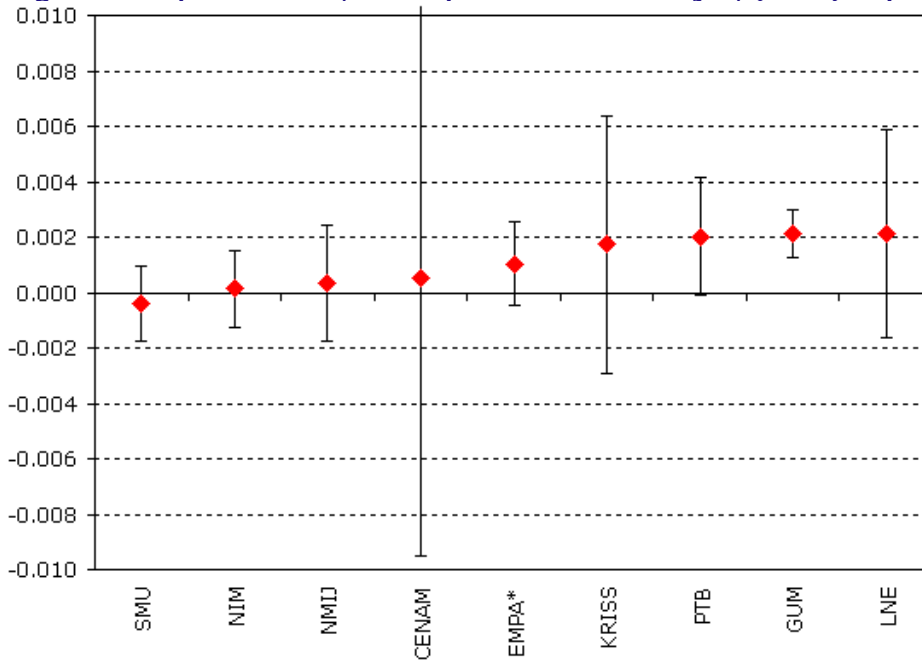
* EMPA was a participant in the CIPM MRA at the time of the comparison

Green triangle: participant in the subsequent key comparison CCQM-K29.1, also indicated with "(s)"

MEASURAND : Mass fraction of Phosphate in anion calibration solution

NOMINAL VALUE : ~ 1 g/kg

Degrees of equivalence D_i and expanded uncertainty U_i ($k = 2$) expressed in g/kg



* EMPA was a participant in the CIPM MRA at the time of the comparison