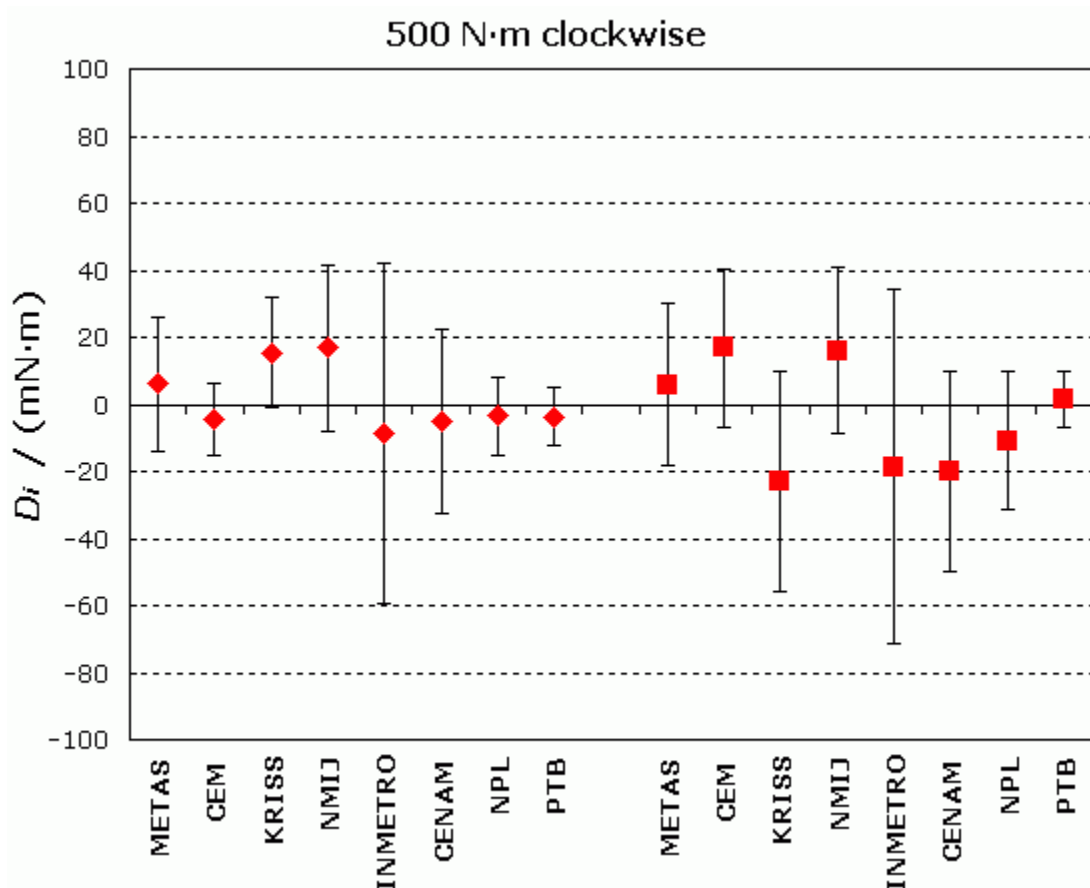


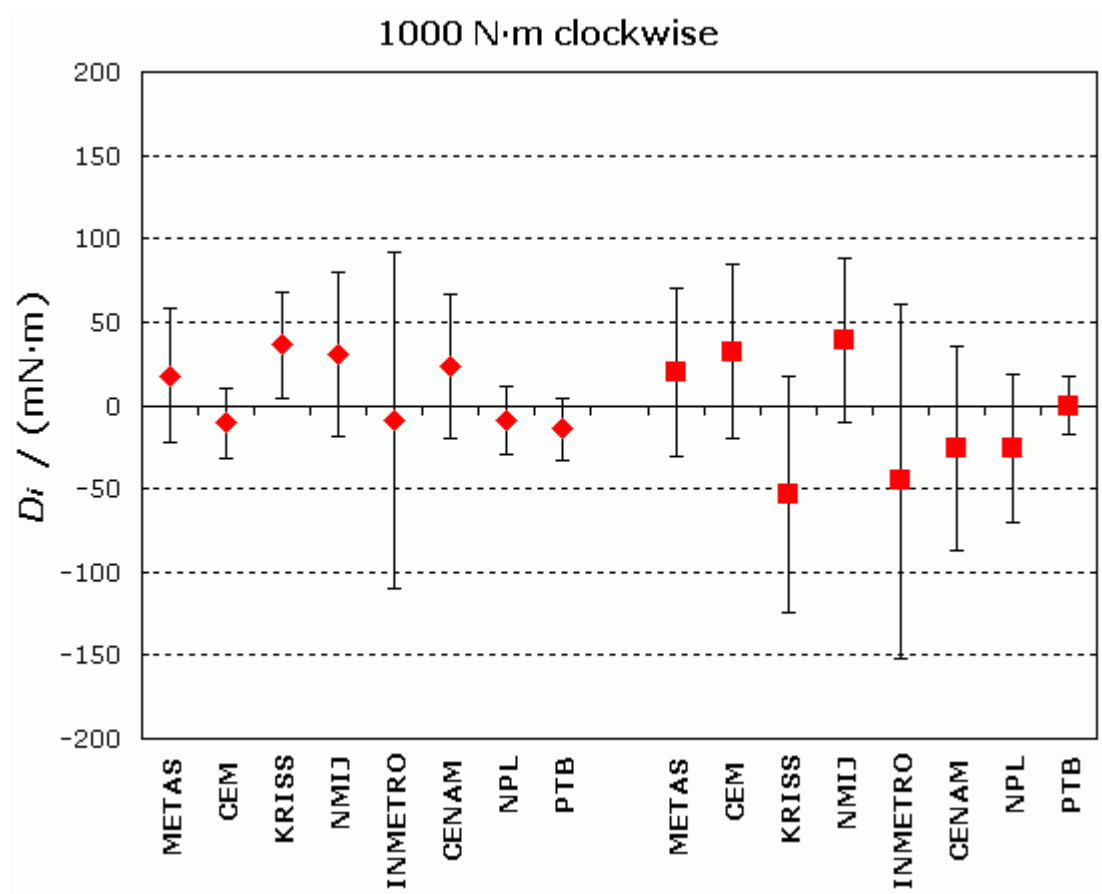
MEASURAND : Torque

NOMINAL VALUE : $T_{\text{nom}} = 500 \text{ N}\cdot\text{m}$ clockwise torqueDegrees of equivalence D_i and expanded uncertainty U_i ($k = 2$) expressed in (mN·m)**Red diamonds:** transducer TB2 S/N 044430025**Red squares:** transducer TT1 S/N 36079-01

MEASURAND : Torque

NOMINAL VALUE : $T_{nom} = 1000 \text{ N}\cdot\text{m}$ clockwise torque

Degrees of equivalence D_i and expanded uncertainty U_i ($k = 2$) expressed in (mN·m)



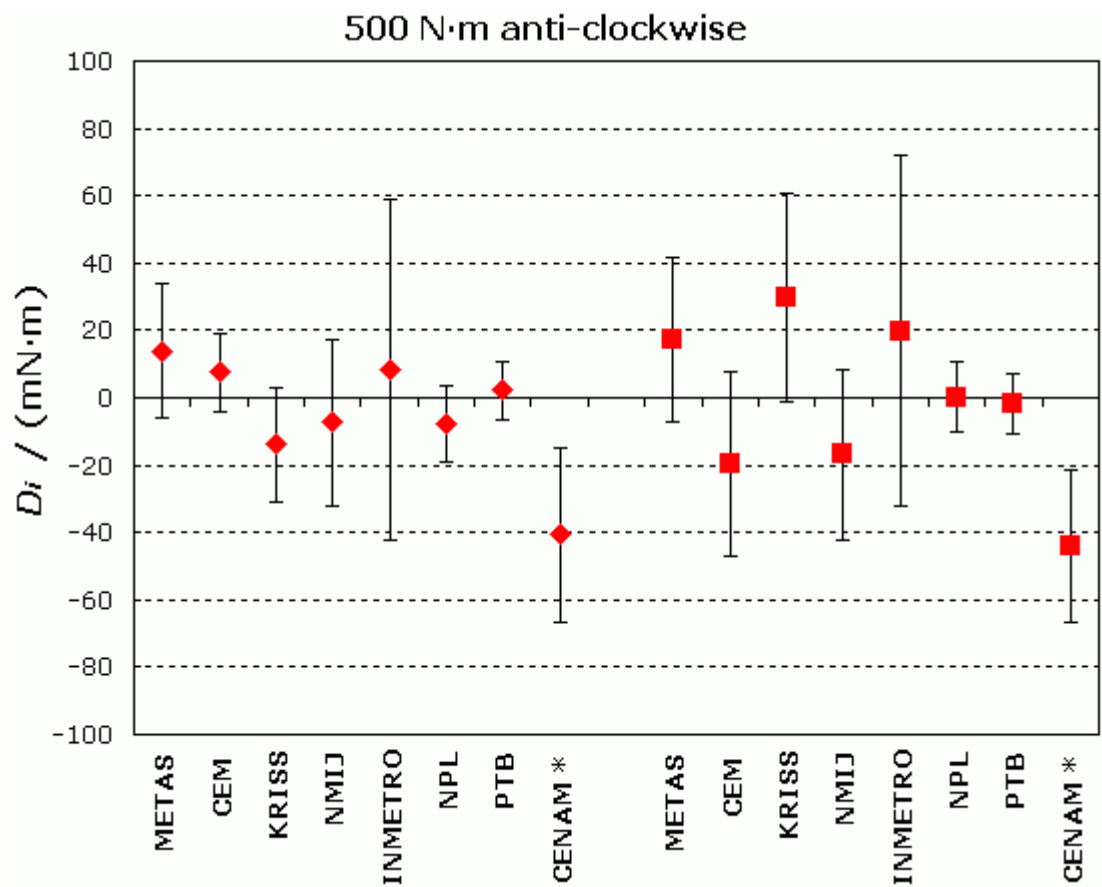
Red diamonds: transducer TB2 S/N 044430025

Red squares: transducer TT1 S/N 36079-01

MEASURAND : Torque

NOMINAL VALUE : $T_{nom} = 500 \text{ N}\cdot\text{m}$ anti-clockwise torque

Degrees of equivalence D_i and expanded uncertainty U_i ($k = 2$) expressed in (mN.m)



Red diamonds: transducer TB2 S/N 044430025

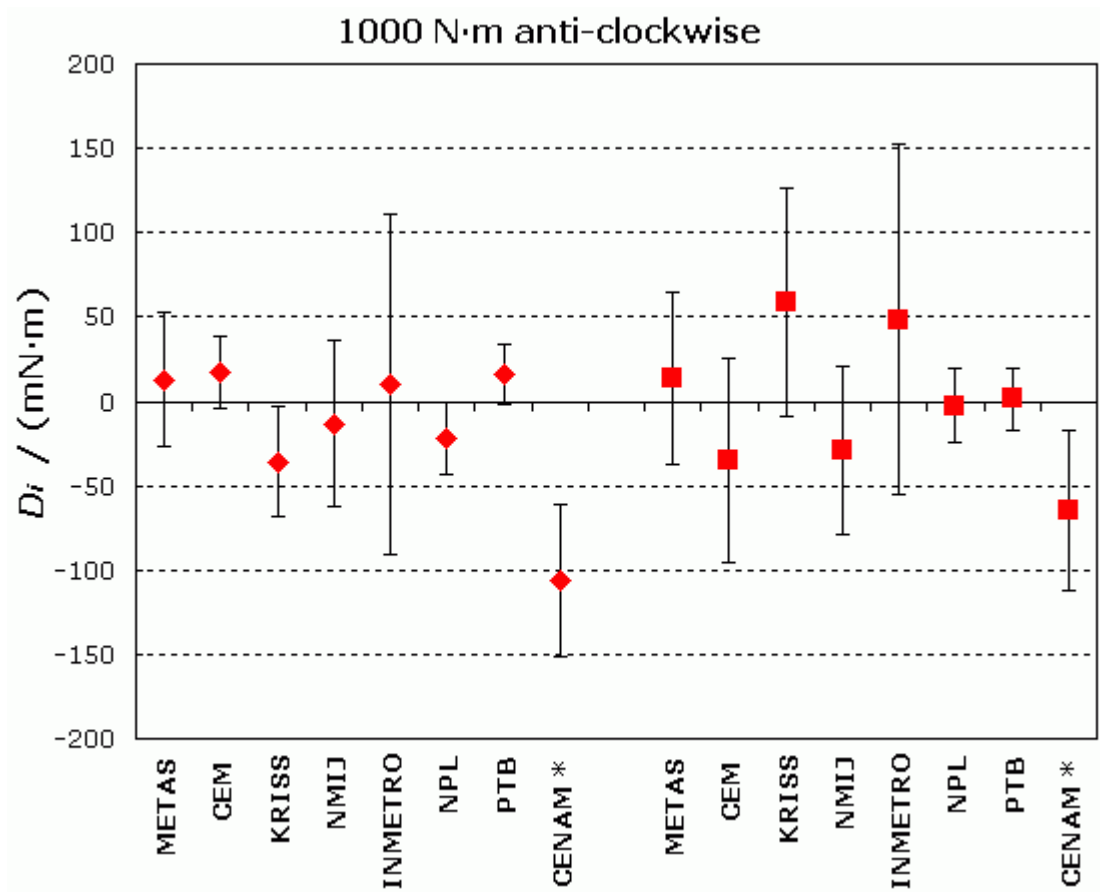
Red squares: transducer TT1 S/N 36079-01

* The results of this participant were not used for the calculation of the reference value (see [CCM.T-K1 Final Report](#))

MEASURAND : Torque

NOMINAL VALUE : $T_{nom} = 1000 \text{ N.m}$ anti-clockwise torque

Degrees of equivalence D_i and expanded uncertainty U_i ($k = 2$) expressed in (mN.m)



Red diamonds: transducer TB2 S/N 044430025

Red squares: transducer TT1 S/N 36079-01

* The results of this participant were not used for the calculation of the reference value (see [CCM.T-K1 Final Report](#))